



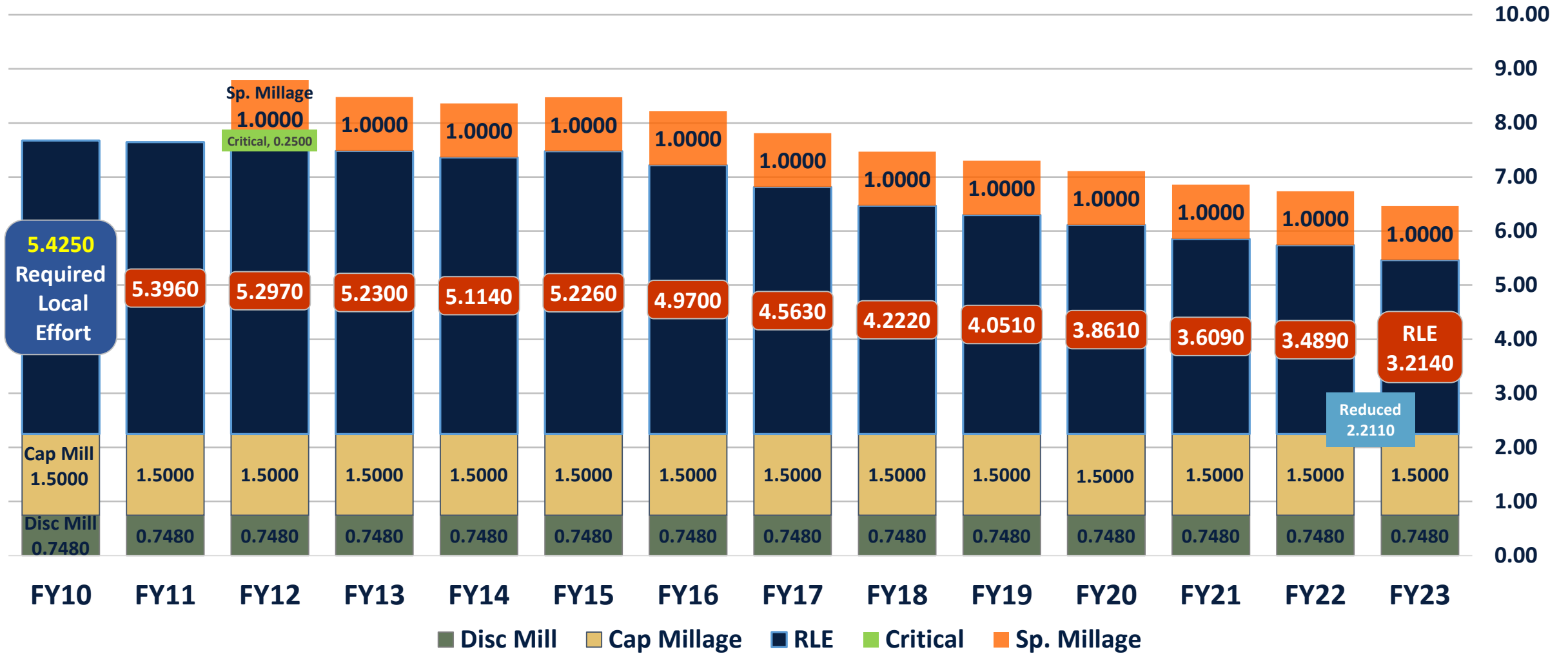
Public Hearing FY 2023 Tentative Budget

Doreen Concolino
Interim Chief Financial Officer
July 26, 2022

Millage Rate Comparison

Description	2021-22	2022-23	Change
Required Local Effort	3.489	3.214	(0.275)
Discretionary	0.748	0.748	-
Additional Voted Millage	1.000	1.000	-
Subtotal Operating	5.237	4.962	(0.275)
Capital Projects	1.500	1.500	-
Total Millage	6.737	6.462	(0.275)

Millage Rates



Homeowner Impact

Description	Values	Taxes
Home Just Value Prior Year*	\$ 258,107	
Less Homestead Exemption	\$ 25,000	
Taxable Value Prior Year	\$ 233,107	
Taxes Paid Prior Year		\$ 1,570
Home Just Value Current Year	\$ 265,100	
Less Homestead Exemption	\$ 25,000	
Taxable Value Current Year	\$ 240,100	
Taxes Proposed Current Year		\$ 1,552
Net Change in Taxes		\$ (18)
*with Save Our Homes		

Commercial Owner Impact

Description	Values	Taxes
Property Just Value Prior Year	\$ 867,077	
Less Homestead Exemption	\$ -	
Taxable Value Prior Year	\$ 867,077	
Taxes Paid Prior Year		\$ 5,841
Property Just Value Current Year	\$ 1,000,000	
Less Homestead Exemption	\$ -	
Taxable Value Current Year	\$ 1,000,000	
Taxes Proposed Current Year		\$ 6,462
Net Change in Taxes		\$ 621

Proposed Annual Budget 2022-23



Timeline of Budget Process

- Community input and legislative priorities – Fall
- Governor’s Budget – January
- Office of Economic and Demographic Research (EDR) Forecast – January
- Legislative Session – January through March
- Initial school allocations – March
- Board work session – May
- Proposed millage and budget advertised – July 24
- Public hearing on Tentative Budget– July 26
- Public hearing on Adopted Budget – September 13



Budget Summary

- Compensation to employees
- Increased dollars for safety and mental health
- Funding for traditional, charter and scholarship students
- Infusion of ESSER funding
- Maintains focus on district's strategic plan
- Preserves academic programs, retains highly qualified teachers, and protects arts, athletics and student activities



Summary of Five Funds

Fund	2021-22	2022-23	Difference
General	2,290,094,240	2,476,476,959	186,382,719
Debt Service	233,410,469	235,204,495	1,794,026
Capital Projects**	2,119,029,845	1,822,300,061	(296,729,784)
Special Revenue*	236,856,988	272,539,641	35,682,653
Internal Service	353,668,396	391,949,921	38,281,525
Totals	5,233,059,938	5,198,471,077	(34,588,861)

*Food Service, Extended Day and School Internal Accounts; other grant awards to be amended into budget as approved.

**Includes carry-over project balances for 2021-22 only.

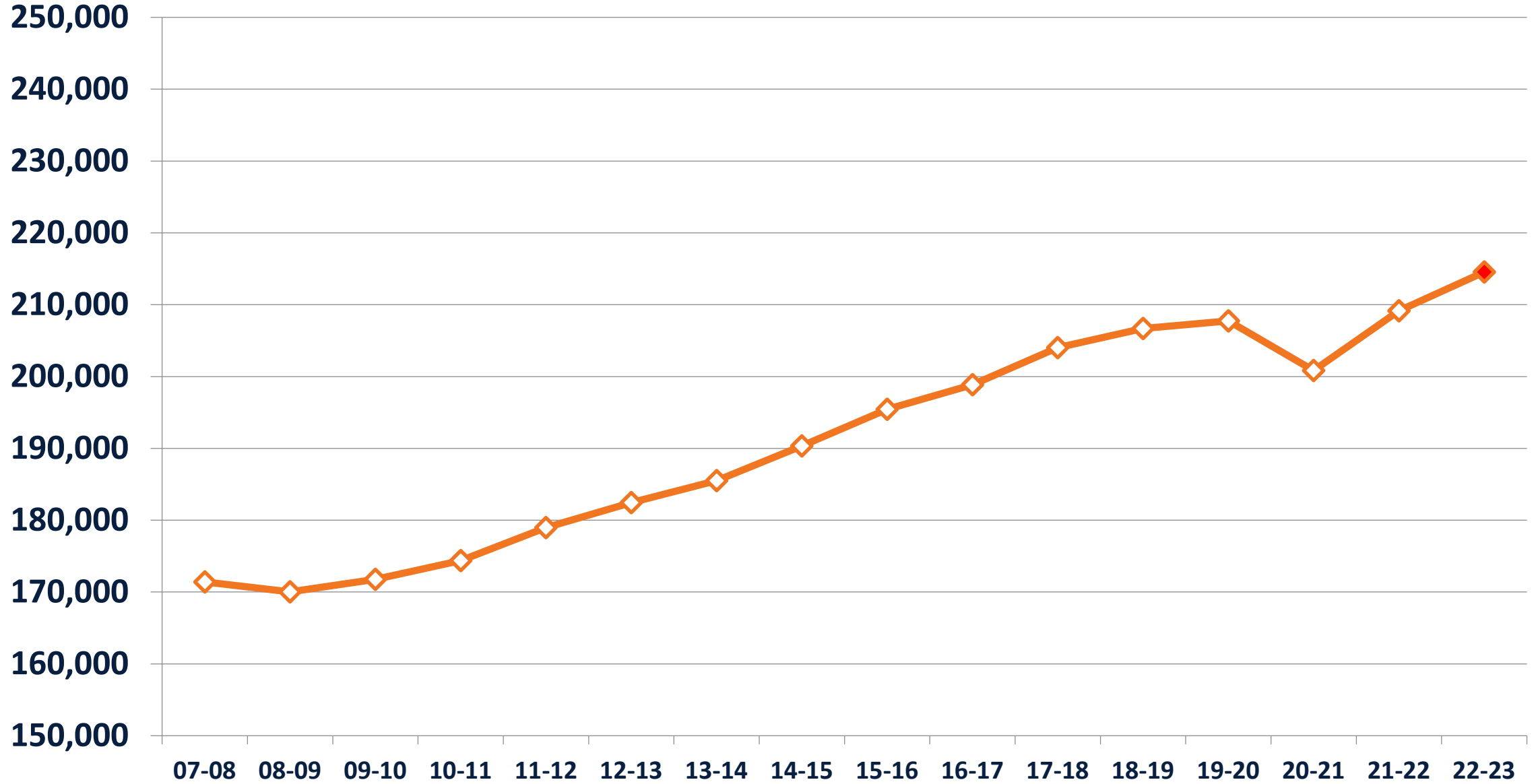
General Fund



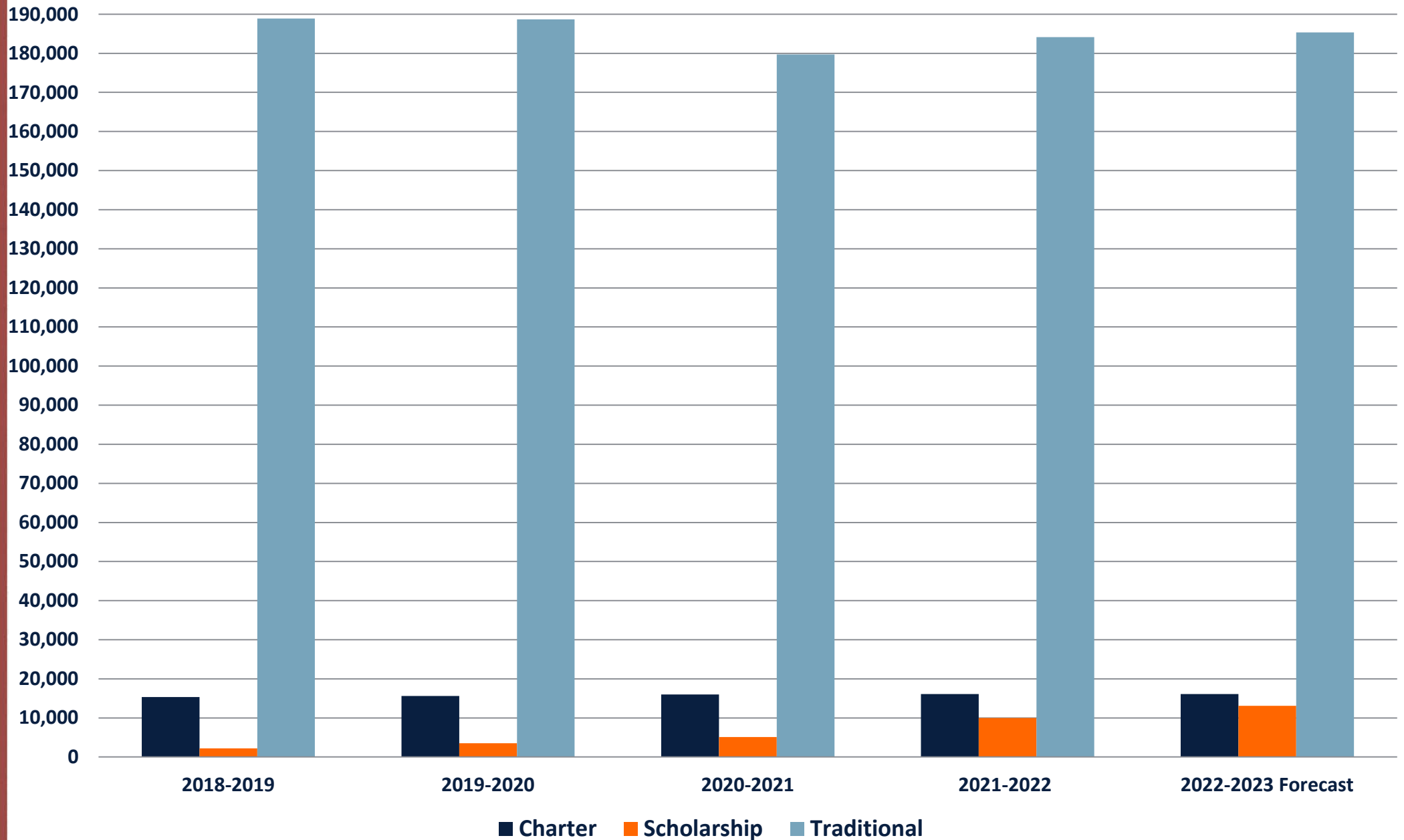
Estimated Revenue



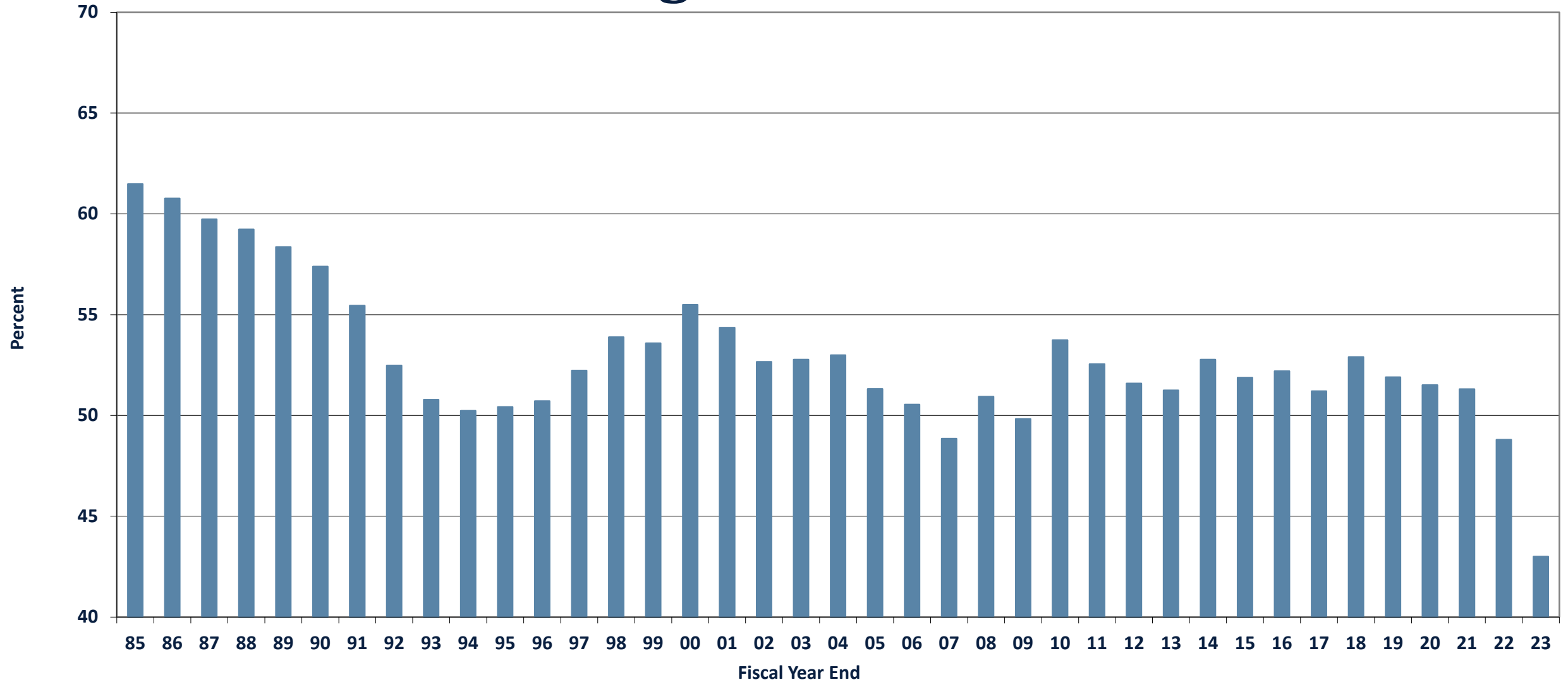
FTE Actual and Forecast



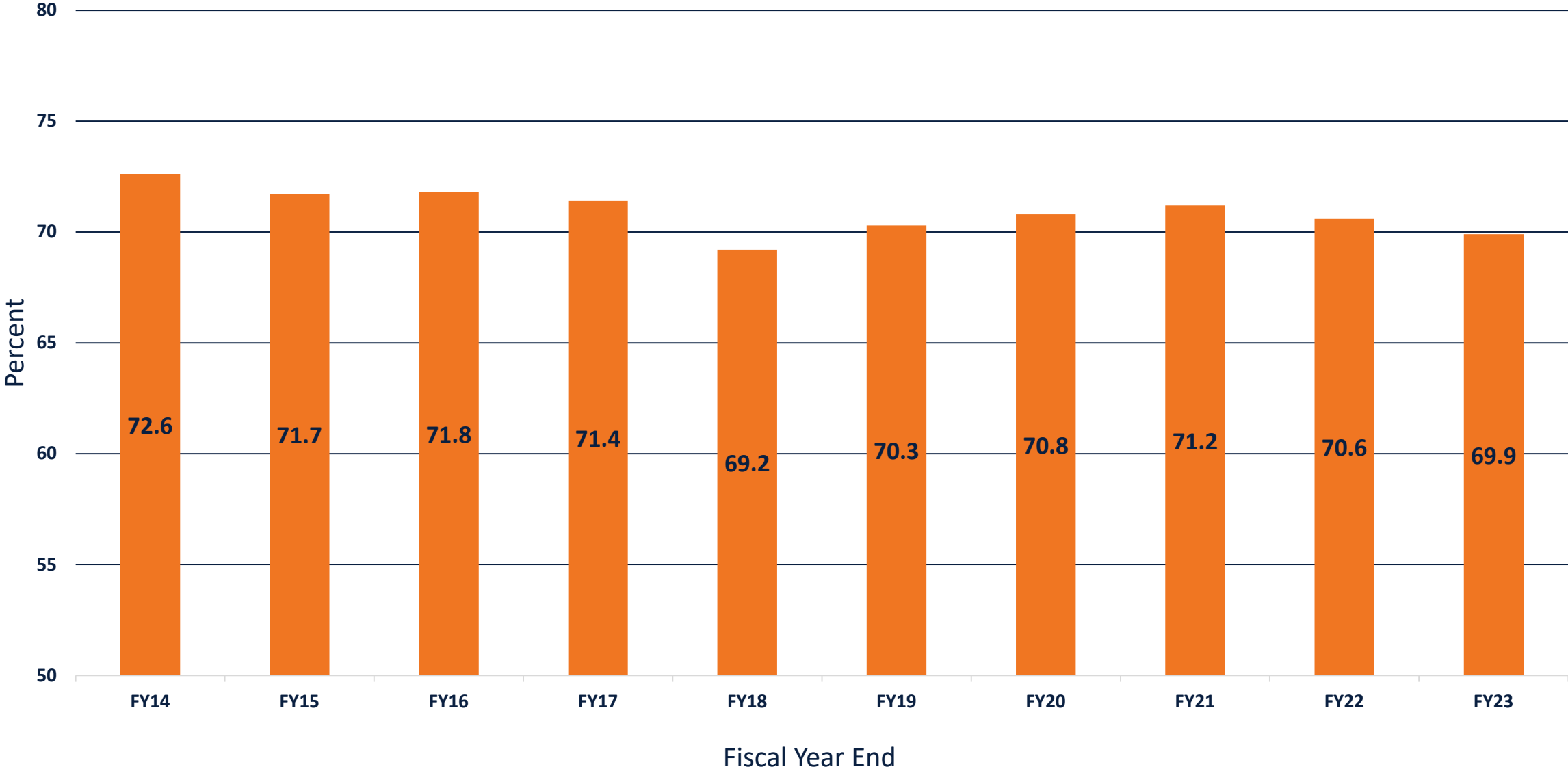
FTE Actual and Forecast



Percentage of State General Revenue Going to Education

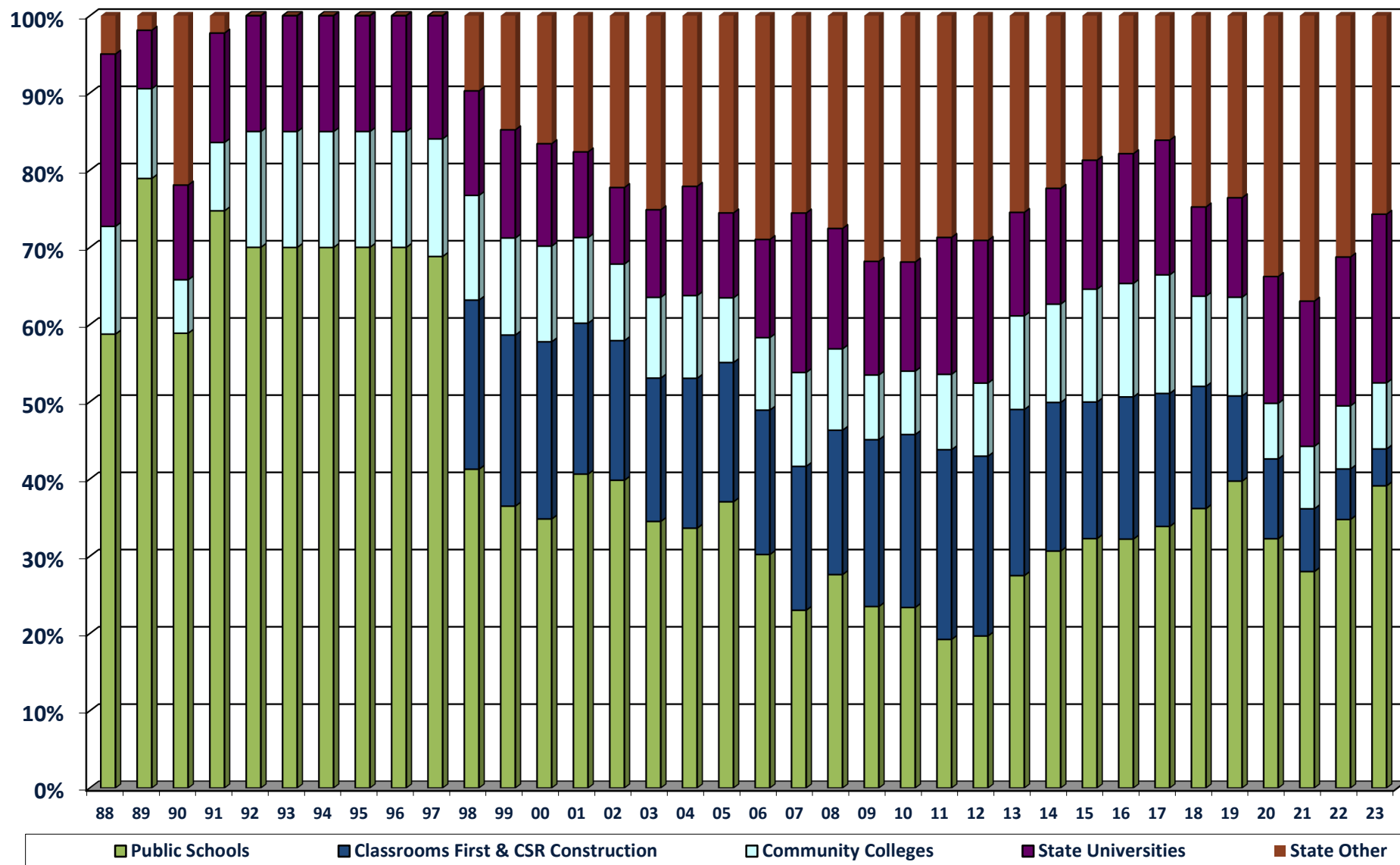


Percentage of General Revenue to Public Schools

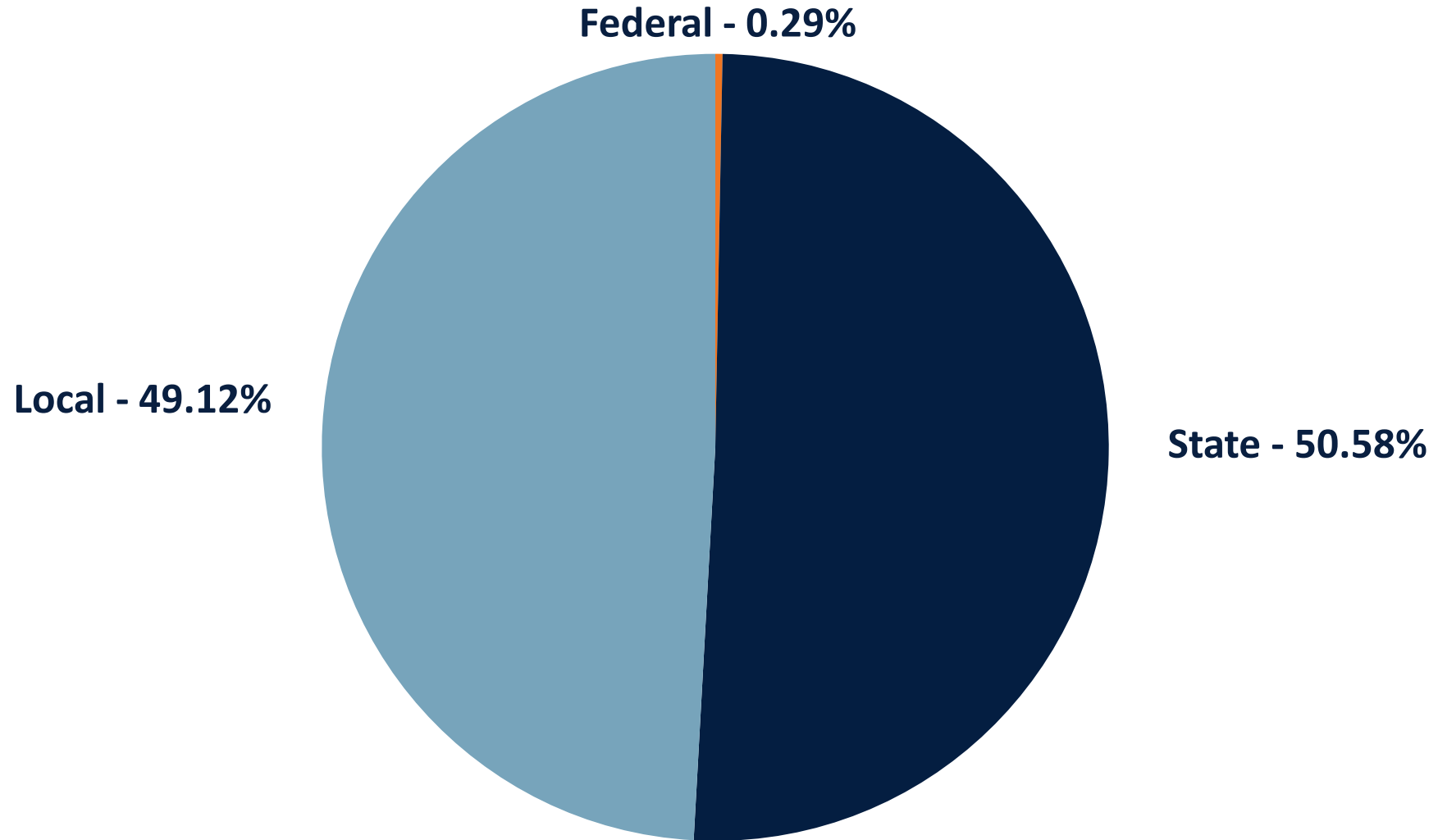


Lottery Appropriations for Florida

Reflects How Lottery Funds Were Dispersed to Education



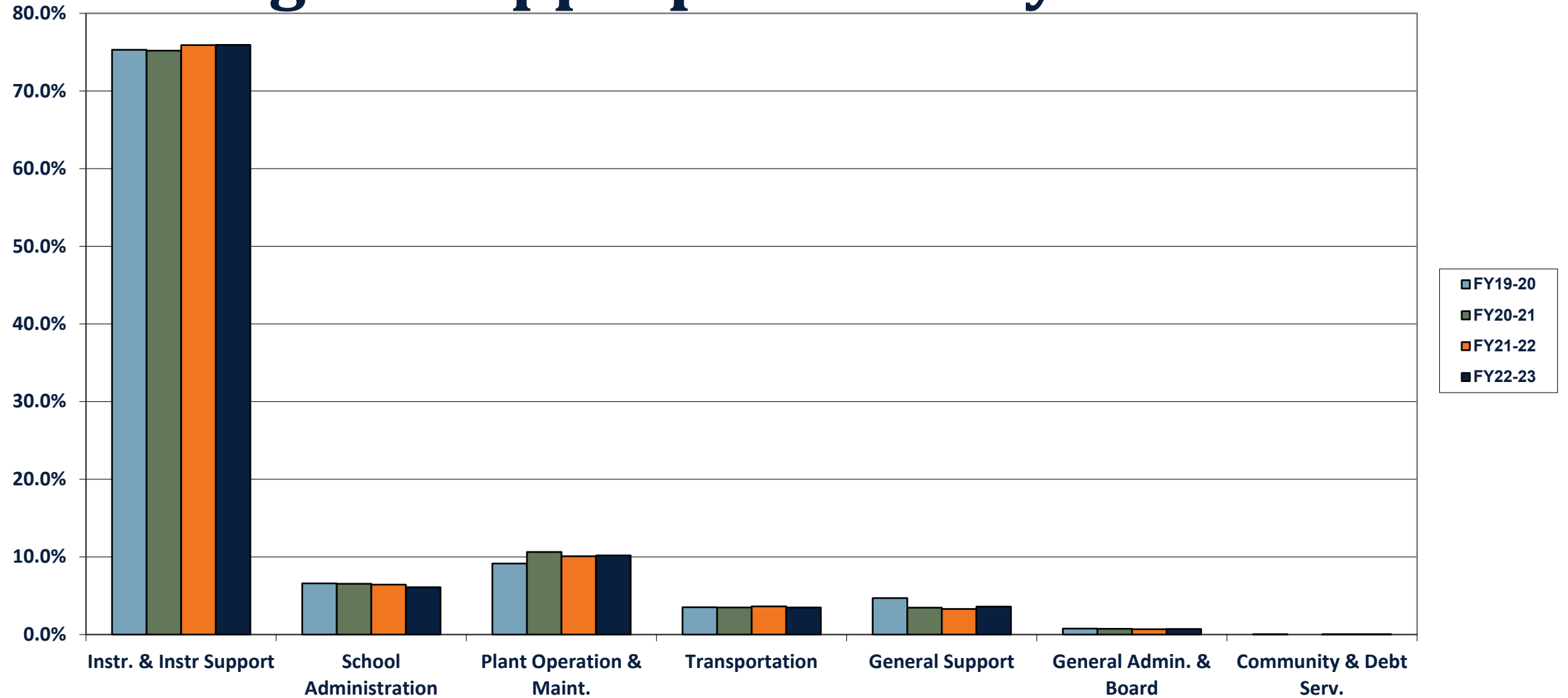
Estimated Revenues by Source



Appropriations



General Fund Budgeted Appropriations by Function



Capital Projects Fund

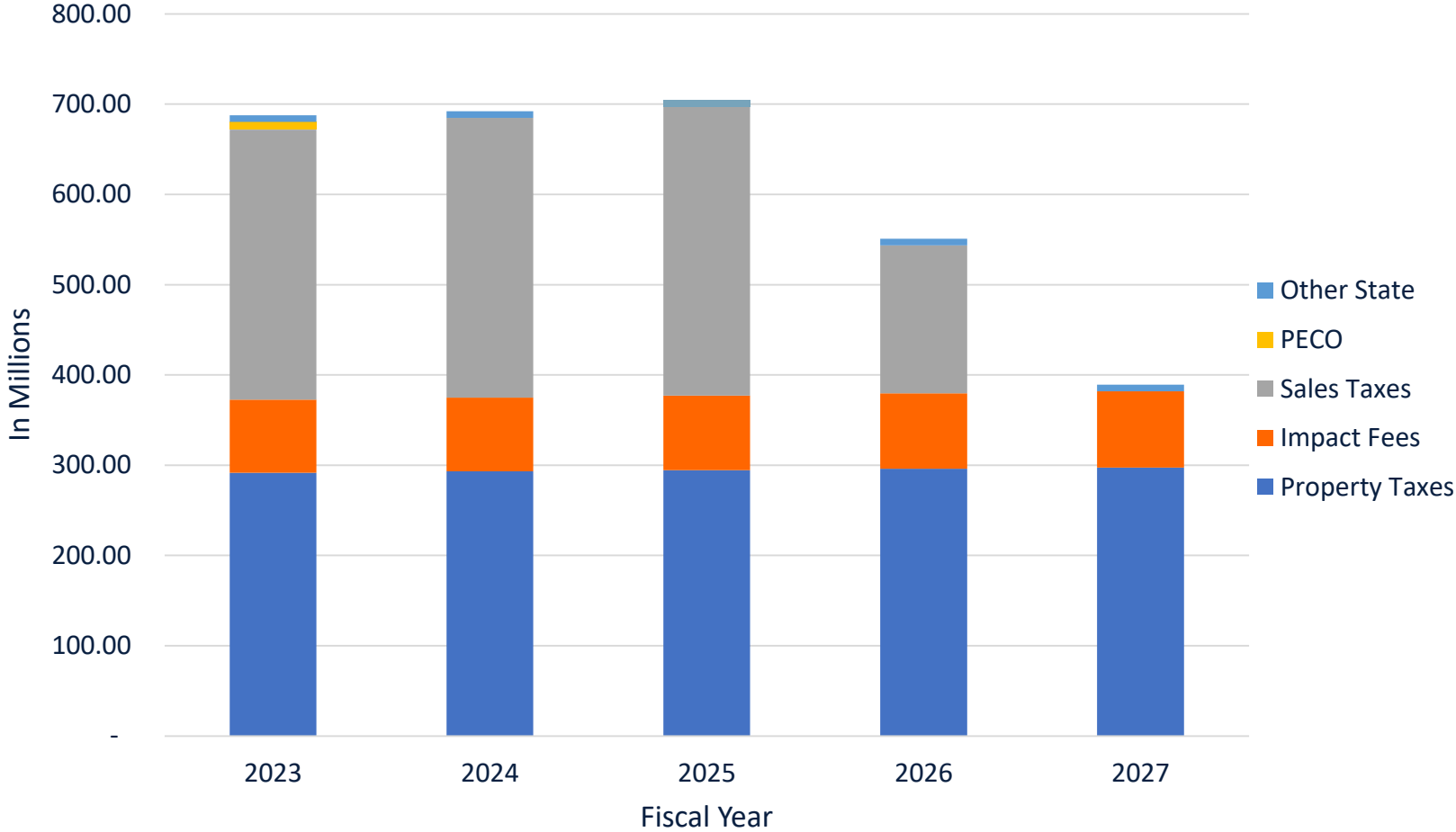


Capital Projects Fund

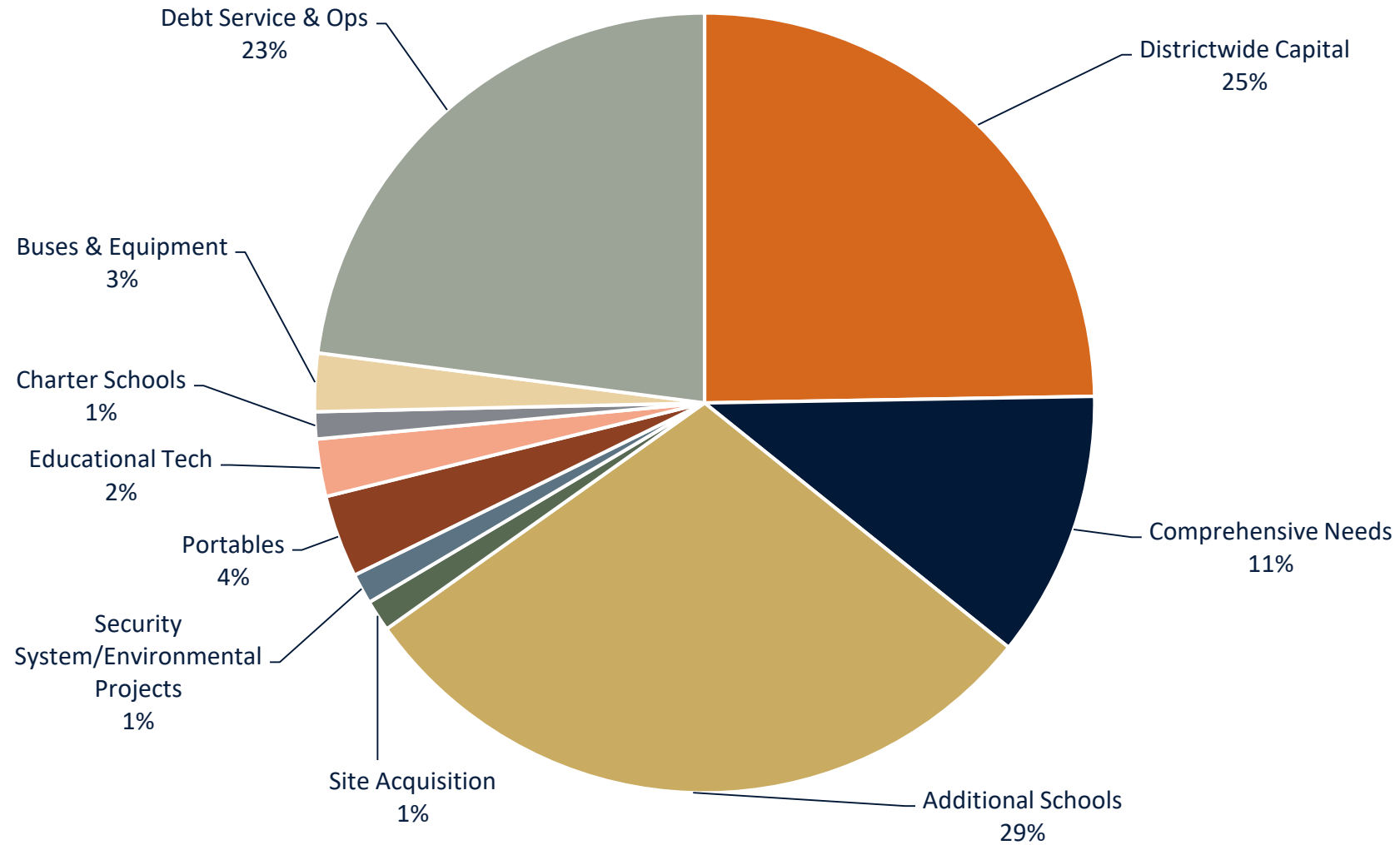
- Budget – \$ 1,822,300,061
- Primary revenue sources – sales surtax, property tax, impact fees
- Minimal state support
- Primary uses are for comprehensive renovations, new schools, capital renewal, and debt service & operations



Budgeted Capital Revenues by Source



Capital Projects Use of Funds (Excluding Reserves)



Tentative Capital Plan

- Includes new capacity projects based on recommendations from the Advance Planning Committee
- Includes funding for Functional Equity projects
- Provides funding for Pre-2003 Sales Tax school projects
- Includes funding for repurposing schools
- Capital renewal projects



Five-Year New School Openings

- 2022 Hamlin ES
- 2022 Panther Lake ES
- 2022 Stonewyck ES
- 2022 Hamlin MS
- 2022 Kelly Park School
- 2023 Water Spring MS



Five-Year New School Openings

- 2024 129-M-SE-2
- 2024 47-E-W-4
- 2024 97-E-SE-2
- 2024 50-H-SE-2
- 2025 130-E-SE-2



FY2023 Comprehensive Projects Construction

- Orange Technical College East
- Orange Technical College West
- Three Points ES (Pre-2003 Sales Tax school)
- Howard MS (Pre-2003 Sales Tax school)
- Lakeview MS (Pre-2003 Sales Tax school)



FY2023 Comprehensive Projects Design

- Avalon ES (Pre-2003 Sales Tax school)
- Camelot ES (Pre-2003 Sales Tax school)
- Citrus ES (Pre-2003 Sales Tax school)
- Endeavor ES (Pre-2003 Sales Tax school)
- Ocoee MS (Pre-2003 Sales Tax school)



Other FY2023 Recommended Appropriations

- School bus replacement - \$18.5m
- Portable moves and leasing - \$26.3m
- Charter school capital funding - \$8.6m
- District-wide painting - \$6.4m
- Digital technology replacement - \$8.4m



Debt Service Fund



Special Revenue Fund



Special Revenue Fund

- Total budget – \$272,539,641
- Accounts for the district's Food Service Program and Special Revenue Other Funds

Other Federal Grants will be amended into the budget as approved



Special Revenue Fund

Food Service Program

- Budget – \$222,826,322
- Food Service Program is a self-supporting operation
- Funding is primarily from Federal reimbursement and USDA commodities, as well as local sales
- Meal prices will remain the same for 2022-23

Other Federal Grants will be amended into the budget as approved



Internal Service Fund



Internal Service Fund

- Total budget – \$391,949,921
- Accounts for the district's Employee Benefit Trust Fund, Property Casualty Loss Fund, and Printing Services Fund



Their Success. Our
Your Support. Their
Our Promise. Your
Their Success. Our
Your Support. Their
Our Promise. Your
Their Success. Our
Your Support. Their
Our Promise. Your
Their Success. Our
Your Support. Their
Our Promise. Your
Their Success. Our
Your Support. Their
Our Promise. Your
Their Success. Our

Internal Service Fund

Employee Benefit Trust Fund

- Budget – \$332,620,071
- Funded by Board contributions for employees and deductions for employees and dependents
- Medical and prescription claims payments and charges for services
- Plans continue to comply with Affordable Care Act requirements
- Board contributions for employee-only coverage \$9,289



